

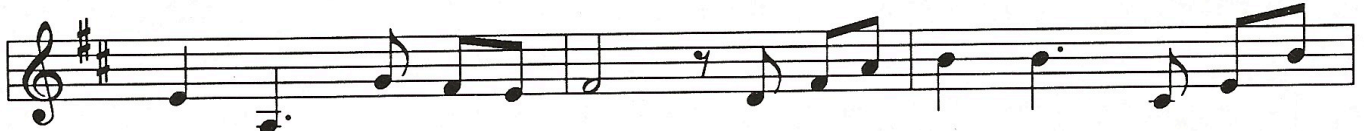
Incarnate Mystery

Based on SHCJ Constitutions
¶ 1, 3, 4, 7; Words of C. Connelly

Terri MacKenzie, SHCJ



Refrain: We're pledged to find you with-in our world; Cre-a-tion



shows us your love un-fur'l'd. With joy we see you, we live with -



in you; We are your bo - dy now, you are our life.



Verses:

1. With - in the rocks and trees,	ma - jes - tic
2. You choose to need us	to make your
3. In - car - nate My - ster - y	the Word that
4. Help us be more a - ware	that life in



stars and seas,	In ev' - ry thing that breathes,	your Spi - rit	lives.
pre - sence known;	All life all love be gins	in you a	lone.
makes us true;	You are the e - ner - gy	that keeps life	new.
you is one;	Gift us with zeal to act,	with ar - doyr	run.

Incarnate Mystery — instrumental edition

Based on SHCJ Constitutions
¶1, 3, 4, 7; Words of C. Connelly

Terri MacKenzie, SHCJ
Arr. R. Marcozzi

With gentle motion, $\text{♩} = 84$

Piano

G C#o F#m B7

(Equal voices)

Em D/A A D Dsus₄ D

We're pledged to

D A

find you with - in our world; Cre - a - tion

D

shows us your love un - fur'd. With joy we

Detailed description: This system contains the first two measures of the song. The vocal line starts with a quarter note 's' and a quarter note 'h' in the first measure, followed by a quarter rest and a quarter note 'o' in the second measure. The piano accompaniment features a steady eighth-note bass line in the left hand and chords in the right hand. A 'D' chord symbol is placed above the second measure.

G F#m B7

see you, we live with - in you; we are your

Detailed description: This system contains the next two measures. The vocal line has a quarter note 's' and a quarter note 'ee' in the first measure, followed by a quarter note 'y' and a quarter note 'o' in the second measure. The piano accompaniment continues with similar patterns. Chord symbols 'G', 'F#m', and 'B7' are placed above the first, second, and third measures respectively.

Ending before verses Final Ending

Em A7 D (To verses) D

bo - dy now, you are our life. life.

(To verses)

Detailed description: This system contains the final two measures. The vocal line has a quarter note 'b' and a quarter note 'o' in the first measure, followed by a quarter note 'd' and a quarter note 'y' in the second measure. The piano accompaniment concludes with a final chord. Chord symbols 'Em', 'A7', 'D', and 'D' are placed above the first, second, third, and fourth measures respectively. The text 'Ending before verses' and 'Final Ending' are placed above the first and third measures. The phrase '(To verses)' appears below the second measure and above the fourth measure.

